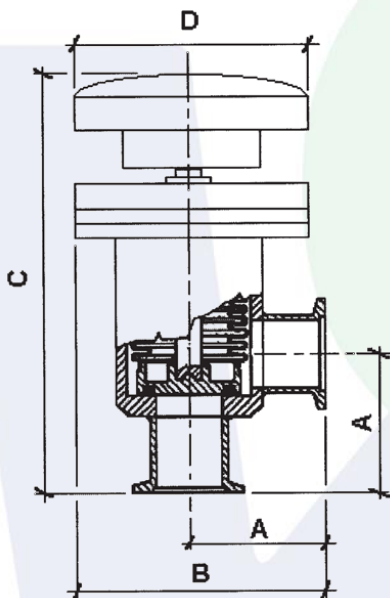


VALVES

Manual 90° UHV valves

The 90° valves are manufactured with normalized Pneurop flanges ISO 16-25-40-50-63-100. The parts under vacuum conditions are manufactured in stainless steel in order to avoid any kind of contamination in the plant. The seal on the body and on the shutter is in Viton®. The opening is controlled by a wheel, and the system is separated from vacuum through a bellow. One of the main characteristics of these valves is the easy disassembly. It is not necessary to remove them from the plant during cleaning, maintenance or modifications (they can be changed in electropneumatic).

- 90° opening
- Stainless steel body and bellow
- Viton® seal
- Max. operating temperature +150°
- Body loss < 5×10^{-8} mbar I.S. -1
- Cap loss < 5×10^{-8} mbar I.S. -1
- Easy maintenance
- Operating in any position



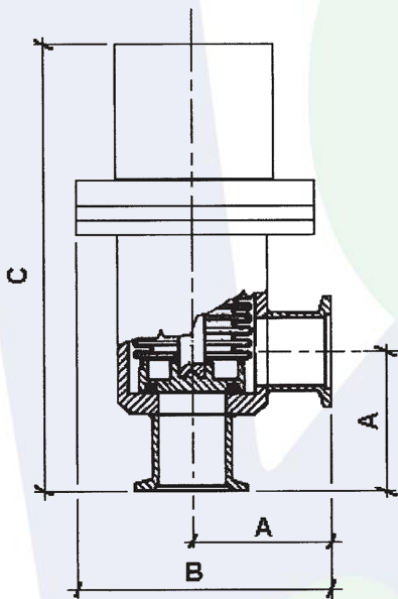
DN	A	B	C	D	CODE
16	40	80	100	45	V001
25	50	80	140	60	V002
40	65	110	160	80	V003
50	70	115	185	80	V004
63	88	145	220	100	V005
100	108	205	250	125	V006

VALVES

Pneumatic 90° UHV valves

The electropneumatic 90° valves are manufactured with Pneurop flanges ISO 16-25-40-50-63. The parts under vacuum conditions are manufactured in stainless steel in order to avoid any kind of contamination in the plant. The seal on the body and on the shutter is in Viton®. The opening is controlled by a pneumatic piston. In case of compressed air failure, the valve closes automatically. The closing system is completely separated from the vacuum through a bellow. The disassembly is very easy.

- 90° opening
- Stainless steel body and bellow
- Viton® seal
- Body loss $< 5 \times 10^{-8}$ mbar I.S. -1
- Cap loss $< 5 \times 10^{-8}$ mbar I.S. -1
- Operating pressure 5÷8 bar
- Easy maintenance
- Operating temperature:
 - Body +150°
 - Impulse +50°
- Operation in any position

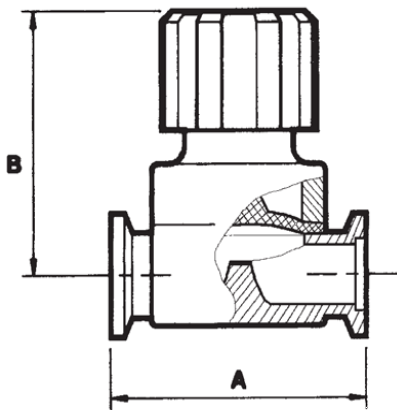


DN	A	B	C	D	CODE
16	40	80	120	-	V007
25	50	80	160	-	V008
40	65	110	200	-	V009
50	70	115	270	-	V010
63	88	145	340	-	V011

VALVES

Membrane valves DN 10-16-25

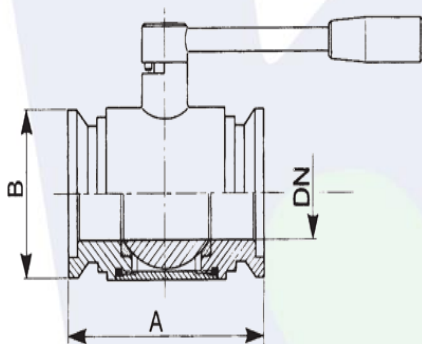
- Manual control
- Nitrile membrane
- Aluminium body
- Max. temperature +110° C
- Vacuum tightness 10^{-9} mbar I.S. -1



DN	A	B	C	D	CODE
10	60	85	-	-	V012
16	80	85	-	-	V013
25	100	140	-	-	V014

Ball valves DN 10-16-25-40-50-63-80-100

- In-line opening
- Stainless steel body
- Max. temperature +150°C
- 90° control (with stop)
- Teflon-Viton® seal gaskets
- Vacuum tightness 10^{-8} mbar I.S. -1

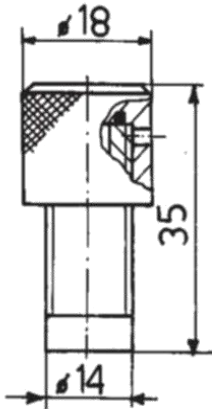


DN	A	B	C	D	CODE
10	80	53	-	-	V015
16	80	53	-	-	V016
25	110	68	-	-	V017
40	130	91	-	-	V018
50	140	98	-	-	V019
63	176	131	-	-	V020
80	216	134	-	-	V021
100	216	155	-	-	V022

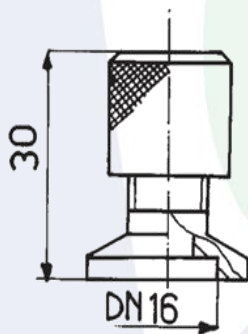
VALVES

Inlet air valves

The inlet air valves are manufactured in stainless steel at fixed setting.
They are used to restore at the atmospheric pressure small/medium chambers.



Welding inlet air valve
Code: **V023**

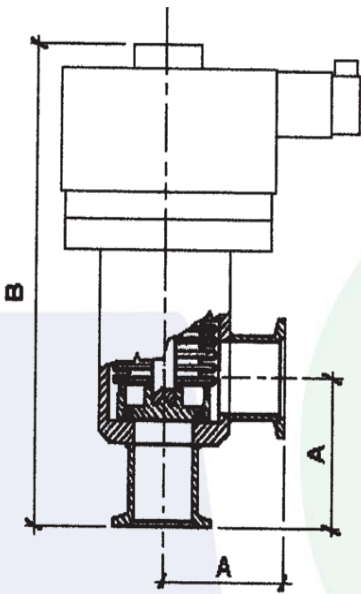


Inlet air valve with KF 16 flange
Code: **V024**

VALVES

Electromagnetic 90° valves

- Normally closed valve
- 90° opening
- Aluminium alloy body
- Stainless steel actuator (bellows)
- Viton® seal
- Maximum loss $< 5 \times 10^{-8}$ mbar I.S. -1
- Max. operating temperature 125°C
- Supply voltage 24VDC – 230 VAC
- Consumption 23 WATT



DN	A	B	C	D	CODE
16	40	115	-	-	V025
25	50	125	-	-	V026