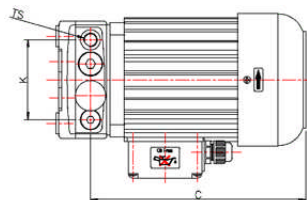
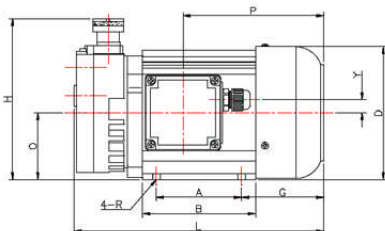
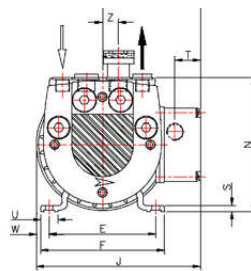
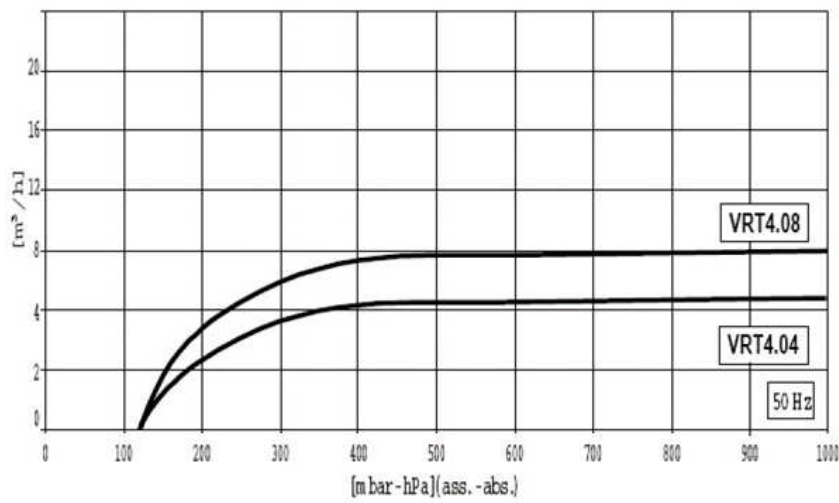
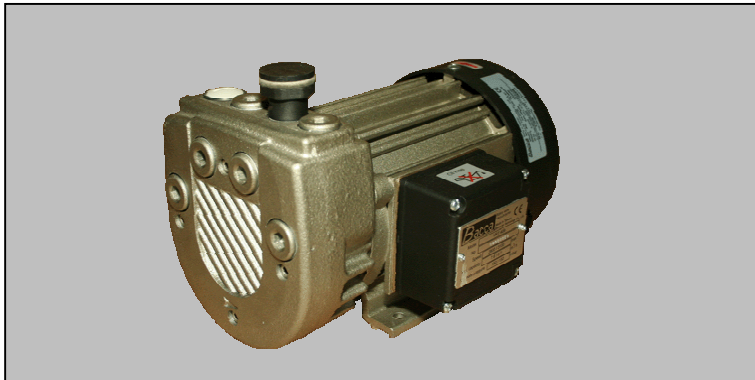


# TIPO VRT 4.08



| Dimensioni | A   | B   | C   | D   | E   | F   | G  | H   | J   | K    | L                | M  |
|------------|-----|-----|-----|-----|-----|-----|----|-----|-----|------|------------------|----|
| VRT4.08    | 80  | 106 | 209 | 125 | 100 | 116 | 77 | 158 | 155 | 79   | 244              | 93 |
|            | N   | O   | P   | R   | S   | T   | U  | W   | Y   | Z    | TS               |    |
| VRT4.08    | 133 | 63  | 132 | Ø7  | 6   | 24  | 16 | 12  | 12  | 15,5 | G <sup>3/8</sup> |    |

**Vuoto Service srl**

Via Filippo Meda, 16 - 20037 Paderno Dugnano (MI) - Italia

Tel. 02.99044533 r.a. - Fax 02.9105503

www.vuotoservice.net - E-mail: info@vuotoservice.net

## TIPO VRT 4.08

| DATI TECNICI              |                   | TIPO VRT 4.08          |         |
|---------------------------|-------------------|------------------------|---------|
|                           |                   | 50 Hz                  | 60 Hz   |
| Portata nominale          | m <sup>3</sup> /h | 8,0                    | 9,6     |
| Vuoto finale              | mbar              | 150                    |         |
| Palette                   |                   | Grafite a lunga durata |         |
| Raffreddamento            |                   | aria                   |         |
| Potenza motore            | kW                | 0,35                   | 0,42    |
| Numero di giri            | rpm               | 1400                   | 1700    |
| Rumorosità                | dB(A)             | 60                     | 61      |
| Temperatura di esercizio* | °C                | 70 - 73                | 72 - 75 |
| Temperatura ambiente      | °C                | 0 - 40                 |         |
| Peso                      | kg                | 12                     |         |
| Connessione aspirazione   | G(BSP)            | 3/8"                   |         |

\*a temperatura ambiente 20°C

| CODICI ORDINAZIONE                             | TIPO VRT 4.08 |
|--|---------------|
|  | 50/60 Hz      |
| <b>Motore Monofase</b><br>230V, 50/60 Hz (IEC) | 641.408       |
| <b>Motore Trifase</b><br>400V, 50Hz (IEC)      | 643.408       |
| Altre Frequenze/Voltaggi                       | A richiesta   |
| Ricambi  |               |
| Kit Palette                                    | 640.213       |
| Kit Manutenzione                               | 640.299       |
| Filtro allo scarico                            | 640.298       |

### Vuoto Service srl

Via Filippo Meda, 16 - 20037 Paderno Dugnano (MI) - Italia

Tel. 02.99044533 r.a. - Fax 02.9105503

www.vuotoservice.net - E-mail: info@vuotoservice.net